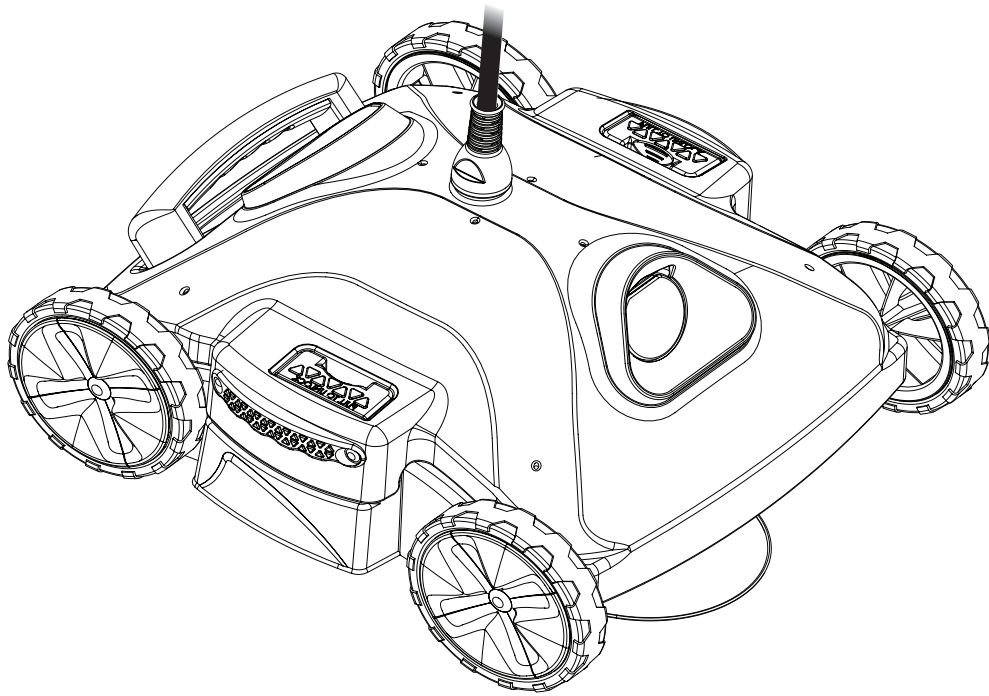


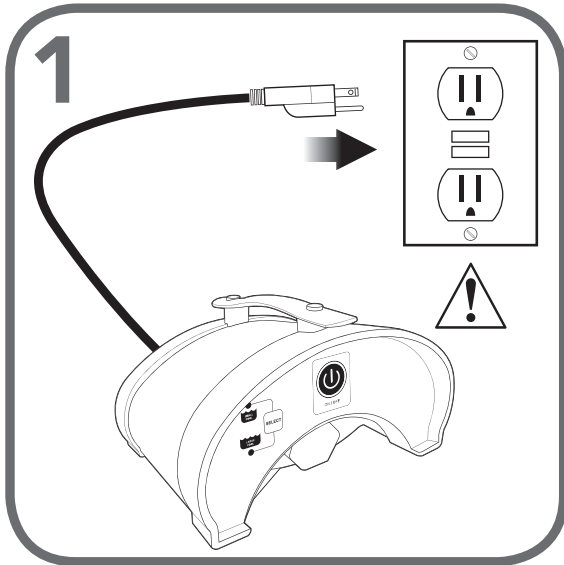
ROBOTIC POOL CLEANER



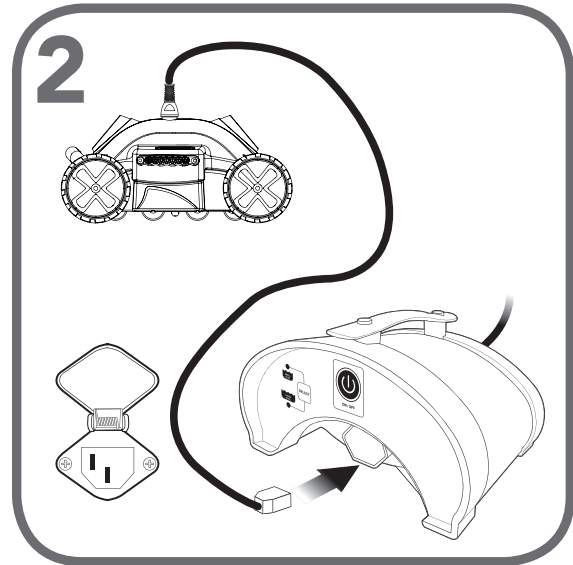
PLEASE READ CAREFULLY BEFORE
USING YOUR POOL CLEANER

**QUICK START
GUIDE**

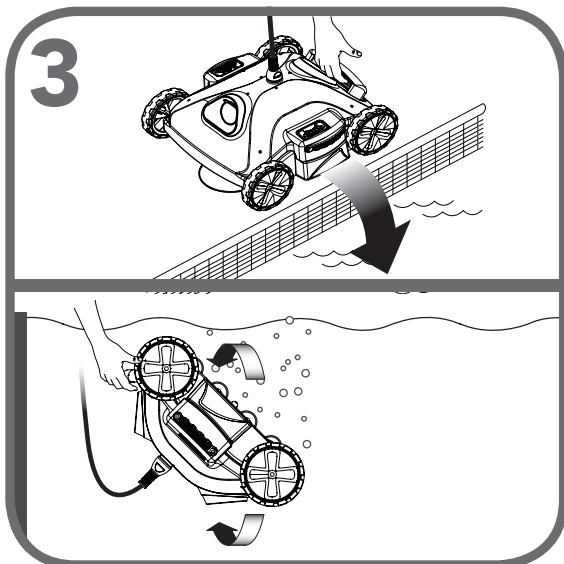
QUICK START INSTRUCTIONS (Steps 1-5)



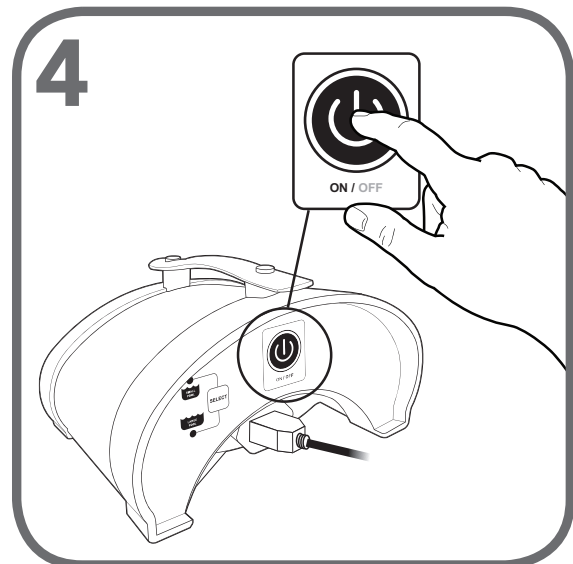
Plug the power supply into a GFCI outlet (Ground Fault Circuit Interrupter)



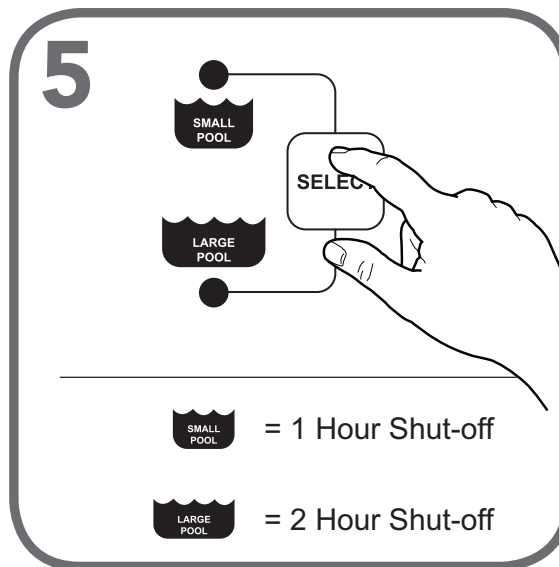
Straighten out the floating cable. Then lift the flap on the power supply. Plug in the cable.



Place the cleaner in your pool and turn upside down to remove any air bubbles.

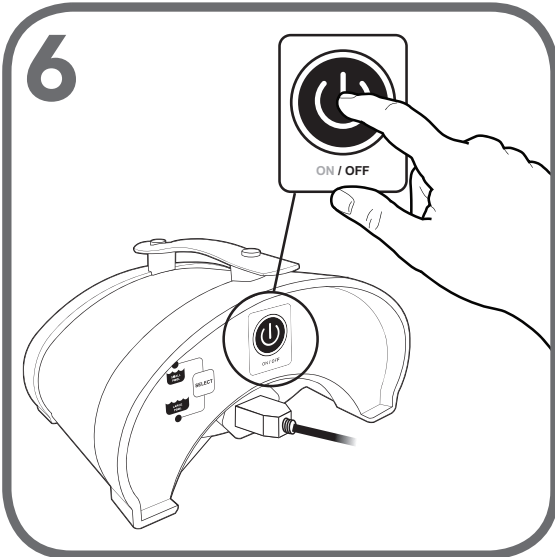


Turn power supply ON

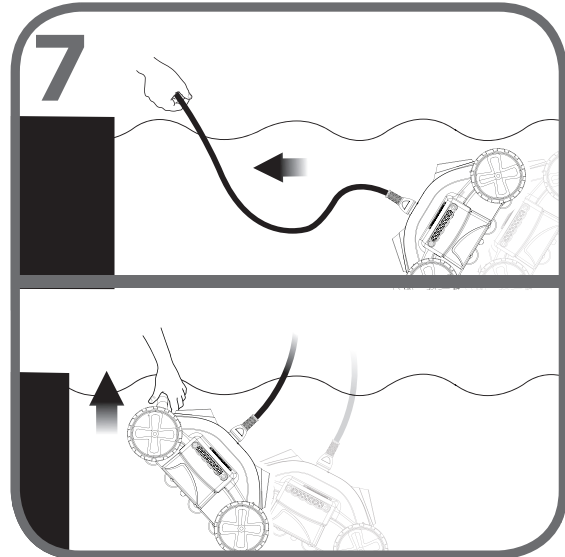


Set the timer and let the cleaner go!

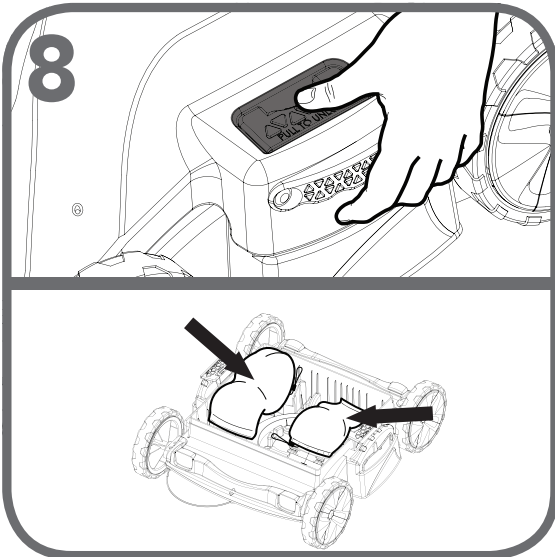
ROBOT REMOVAL and FILTER BAG CLEANING INSTRUCTIONS (Steps 7-11)



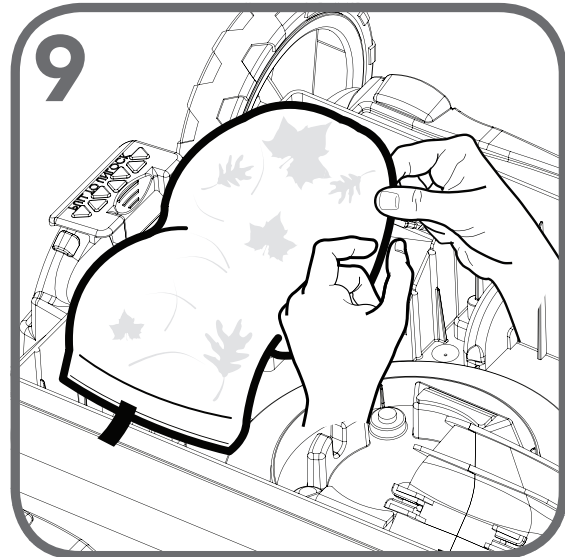
Make sure that the power supply is turned OFF



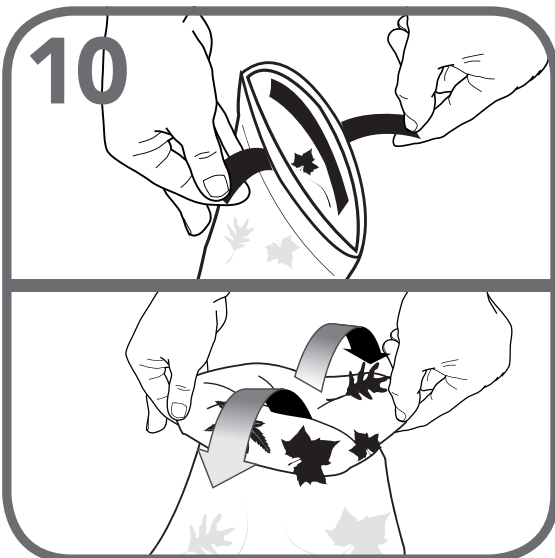
Gently pull cleaner to edge using the E-Z Swivel. Lift unit out with handle and let the water drain.



Push tabs down and outward to remove the cover. This will remove the cover and expose the filter bags.



Remove filter bags from inside cleaner by gently pulling on the elastic band around the suction ports.



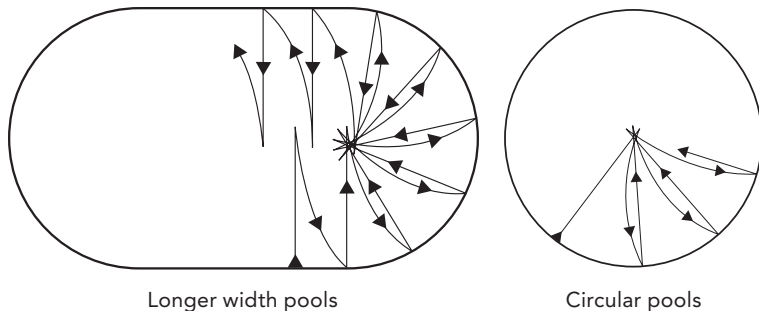
Pull tabs to undo Velcro® and turn the filter bag inside out



Use a garden hose to clean filter bag.

CLEANING PATTERN

This is the anticipated cleaning pattern for your unit. Please be aware that different pool shapes will cause a slight deviation of this pattern. In general this is what should be expected.



TROUBLESHOOTING

These are the most common questions you might have regarding your unit. For more detailed troubleshooting, see the Troubleshooting Guide included in the packaging.

My unit is not sucking up debris:

- Make sure the filter bag is clean.
- Check to see that you've properly set-up the unit and power supply
- Check to see if the propeller is stuck
- Adjust height of the suction ports on the bottom of the unit (see Figure B below)

All LED lights are blinking on the power supply:

- Check to see if the unit is out of water
- Check to see if the filter bag is stuck in the screen
- Check to see if the propeller is stuck
- To restart, press the power button once. Cleaning program will resume from where it left off.

The Floating Cable gets tangled:

- Change the axle set-up (see Figure A below). Unit is most likely turning too sharply. Use the E-Z Swivel to straighten out the cable (see Figure C below)

Unit is stuck in the middle of the pool but the unit still pumps out water:

- Check to see that there is nothing obstructing the cleaner or that the cleaner is not stuck on any loose objects in the pool.
- The suction ports are far too low to the pool bottom. Adjust as necessary. (see Figure B)

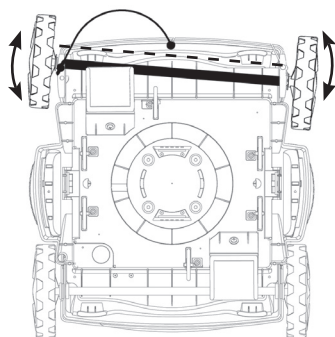


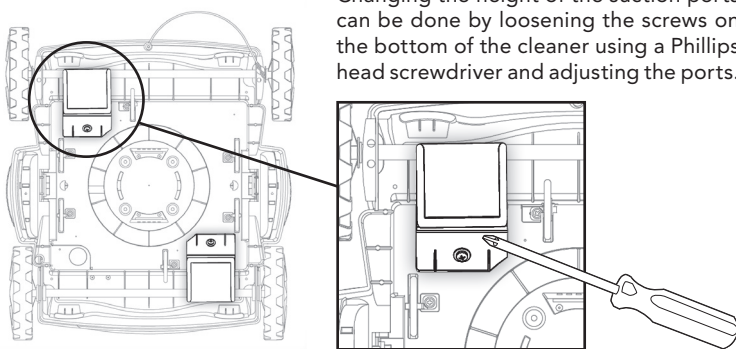
Figure A (bottom view):

By changing the axle set-up using the pins underneath your cleaner, you can adjust how tight or wide the cleaner turns. This can also be used to help untangle the floating cable by forcing the unit to run a reverse pattern.

See the Setting and Troubleshooting Guide for more detailed configurations.

Figure B (bottom view):

Changing the height of the suction ports can be done by loosening the screws on the bottom of the cleaner using a Phillips head screwdriver and adjusting the ports.



WARNINGS



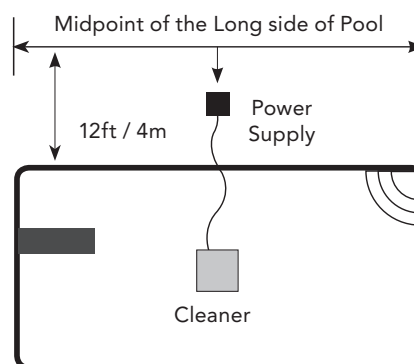
WARNING: Do not turn the Power Supply on, unless the pool cleaner is in the water.

WARNING: Do not operate your machine while people swim in the pool.

WARNING: The Power Supply must be placed at least 12 feet / 4 meters from the pool's edge at all times! See diagram below.

WARNING: To prevent possible electric shock hazard this unit must be connected to an RCD (Residual Current Device) with a related residual operating current not exceeding 30mA.

WARNING: Before performing any troubleshooting maintenance procedures, your Cleaner should be disconnected from the Power Supply (transformer) and the Power Supply should be unplugged from the electrical outlet to prevent the possibility of personal injury or damage to your Cleaner!



DO NOT RETURN CLEANER TO RETAILER!

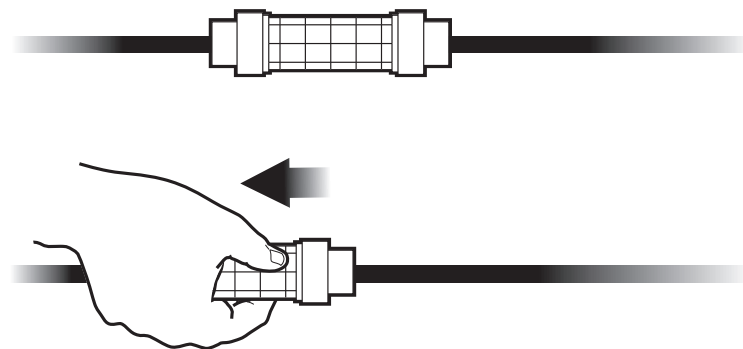
**CALL CUSTOMER SERVICE AT
800-221-1750**

This guide provides basic troubleshooting. A more detailed troubleshooting guide is included separate from this guide.

Figure C:

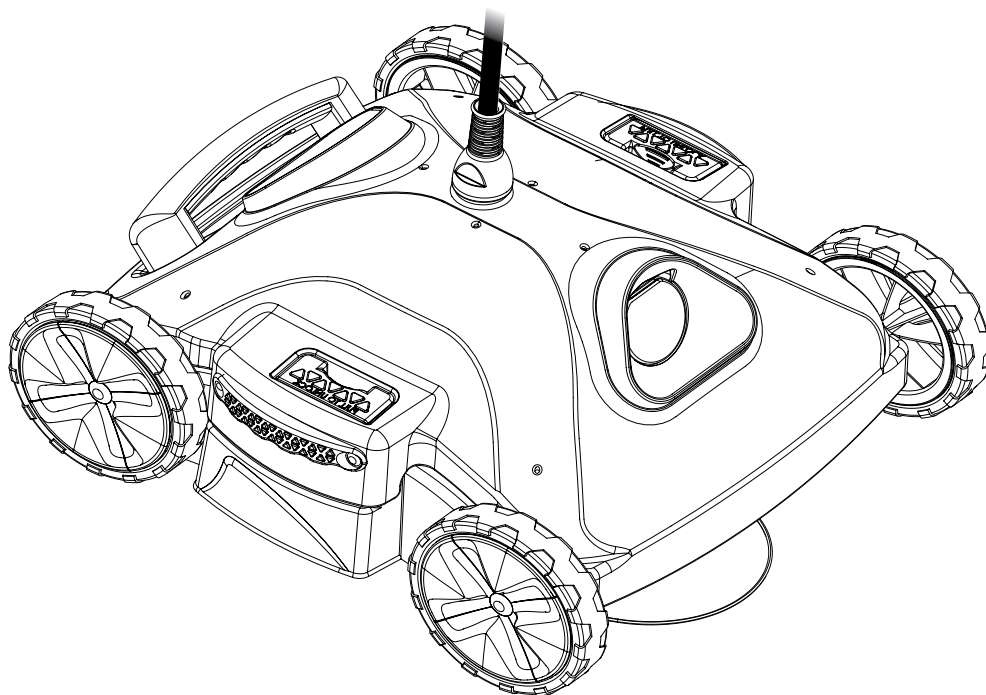
If your cable gets tangled, use the EZ Swivel to straighten out the cable. **Using one hand**, grab the larger grip and pull towards the power supply. Cable will automatically untangle. For more detailed instructions, see the Detailed Instructions and Troubleshooting Guide that is included in the box.

Please disconnect floating cable from power supply FIRST!



ROBOTIC POOL CLEANER

PRODUCT SETTINGS AND TROUBLESHOOTING GUIDE



PLEASE READ CAREFULLY BEFORE
USING YOUR POOL CLEANER

PRODUCT SETTINGS and TROUBLESHOOTING



WARNINGS



WARNING: Do not turn the Power Supply on, unless the pool cleaner is in the water.

WARNING: Do not operate your machine while people swim in the pool.

WARNING: The Power Supply must be placed at least 12 feet / 4 meters from the pool's edge at all times! See diagram below.

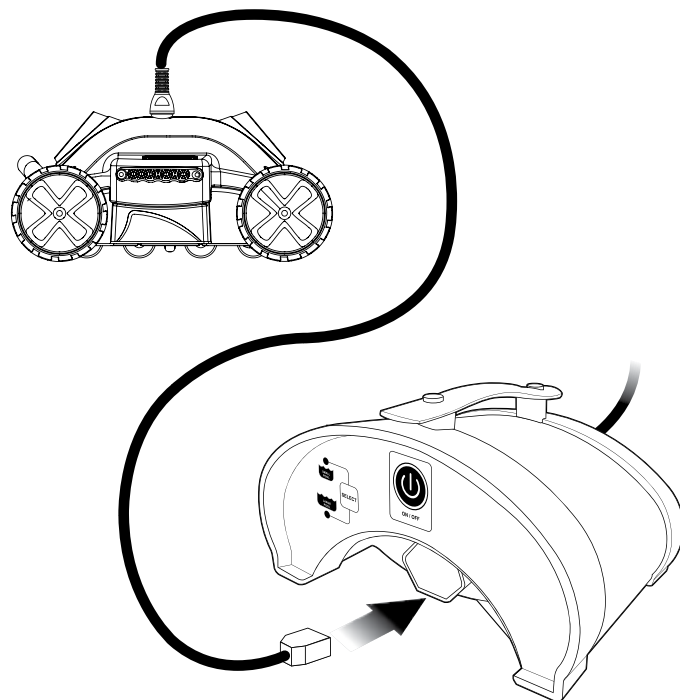
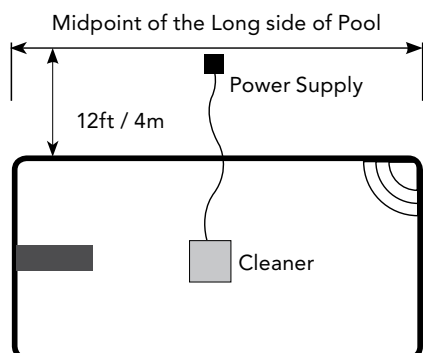
WARNING: To prevent possible electric shock hazard this unit must be connected to an RCD (Residual Current Device) with a related residual operating current not exceeding 30mA.

WARNING: Before performing any troubleshooting maintenance procedures, your Cleaner should be disconnected from the Power Supply (transformer) and the Power Supply should be unplugged from the electrical outlet to prevent the possibility of personal injury or damage to your Cleaner!

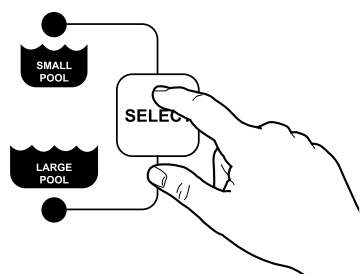
PRODUCT SETTINGS

POWER SUPPLY

Setting up the power supply is simple. First, make sure that the power supply is plugged into a GFCI (Ground Fault Circuit Interrupter) outlet. Then lift the cover on the power supply outlet and connect plug on the floating cable into the power supply.

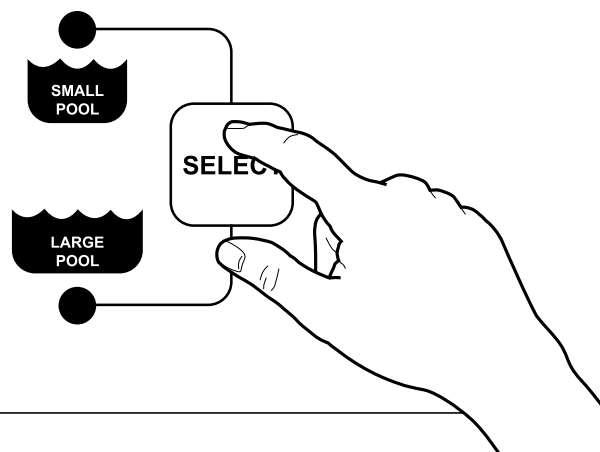


TIMER SETTINGS / POOL SIZE



To turn the power supply **ON**, press and release the power button once.

To turn the power supply **OFF**, press and release the power button. Light will turn OFF



The power supply has **2 settings**. Each setting is determined by the pool size and cleanliness as well as for how long you would like to run the cleaning cycle.

You have an option for **SMALL POOL** and **LARGE POOL**. Press the **SELECT** button to get your correct setting



= 1 Hour Shut-off



= 2 Hour Shut-off

PRODUCT SETTINGS and TROUBLESHOOTING

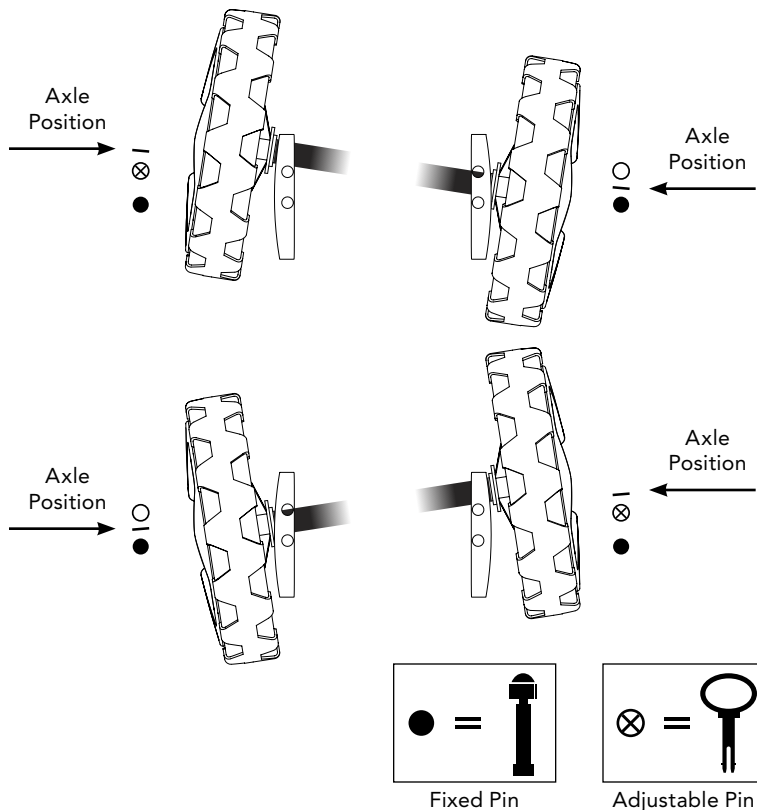
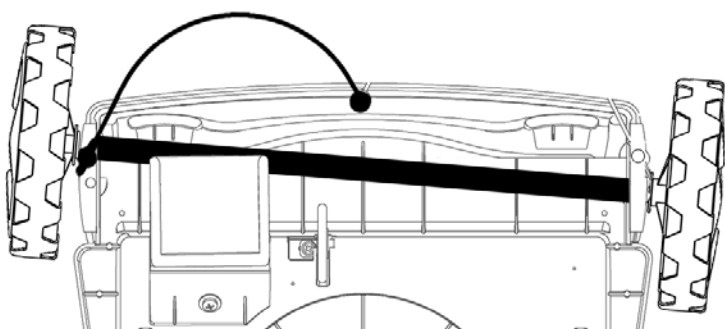
PRODUCT SETTINGS

AXLE AND TURNING PINS

Your cleaner moves about your pool by way of 1 adjustable pin located on each end of the axle on the bottom side of the cleaner. There are various positions that the pins can be set. Each setting will affect how wide or tight the cleaner turns when running in it's cleaning cycle.

It is recommended that before every cleaning cycle you switch the pin position (on the same sides) so that the axle is cleaning the opposite way. This is so that your cleaner can reach all areas of the pool and prevents the cable from tangling.

Make sure the axles are freely moving and the axle channels are clear.



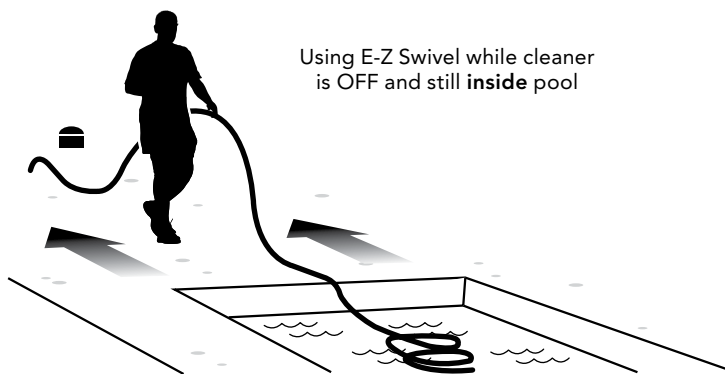
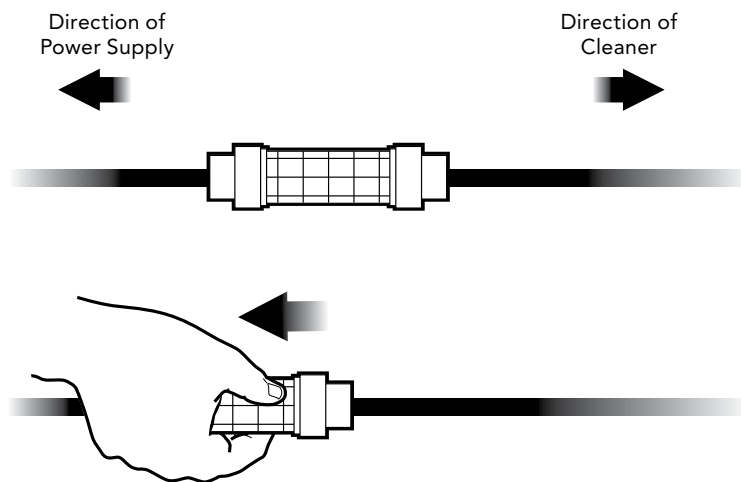
HOW TO USE THE E-Z SWIVEL TO HELP UNTANGLE FLOATING CABLE

The E-Z Swivel is a feature that will help untangle the floating cable should this occur. To use the E-Z Swivel it is recommended that you stand outside of the pool.

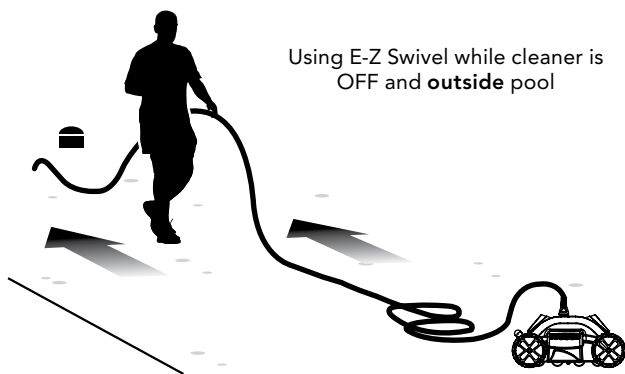
Make sure that the floating cable is disconnected from the power supply!

Now grab the large part of the grip on the floating cable. Using one hand, pull towards the direction that is between you and the power supply and walk away from the cleaner. As you move further from the cleaner, the floating cable will untangle itself and straighten out.

NOTE: It is recommended that you turn OFF the power supply before entering the pool with the cleaner in the water.



Using E-Z Swivel while cleaner is OFF and still inside pool



Using E-Z Swivel while cleaner is OFF and outside pool

PRODUCT SETTINGS and TROUBLESHOOTING

PRODUCT SETTINGS

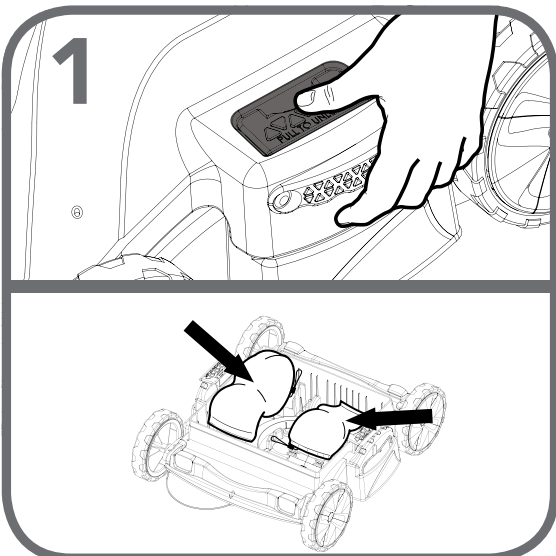
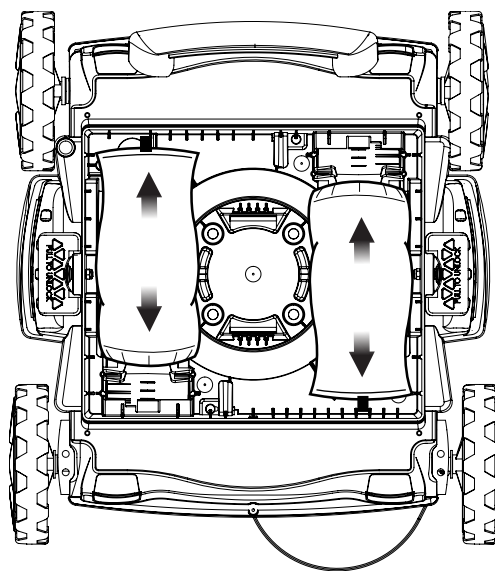
RE-INSTALLING FILTER BAGS AFTER CLEANING

After you have cleaned the filter bags of the collected debris, you'll need to re-install them back into the cleaner. Make sure the elastic opening covers all the way over the opening and that the Velco® end is secure.

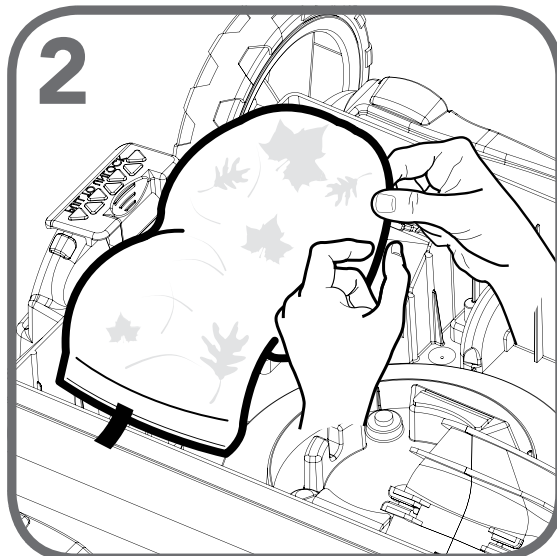
The filter bag should stretch all the way out from end to end. See the diagram for proper placement.

NOTE: Your filter bag is machine washable. Make sure you rinse off any leaves, twigs and larger debris before doing so. Please wash in cold water only. You may use detergent if necessary.

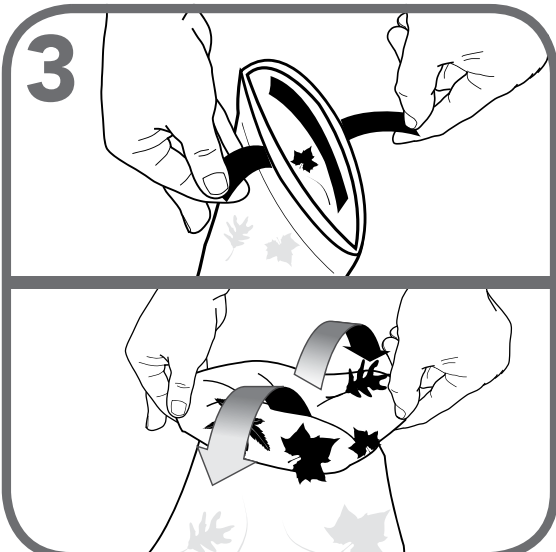
Top View of
Inside the cleaner



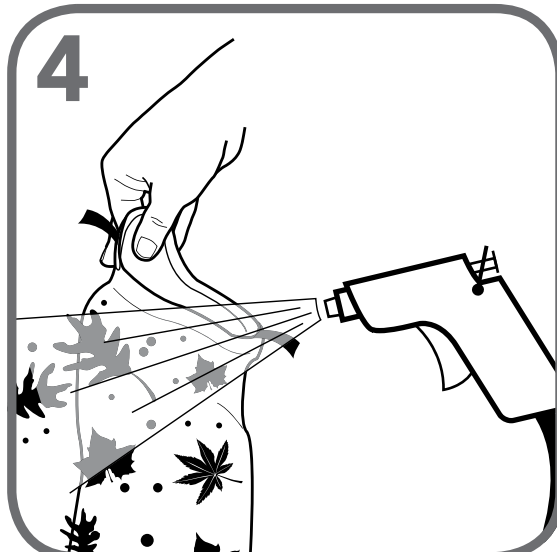
Push tabs down and outward. This will remove the cover and expose the filter bags.



Remove filter bags from inside cleaner by gently pulling on the elastic band around the suction ports.



Pull tabs to undo Velcro® and turn the filter bag inside out



Use a garden hose to clean filter bag.

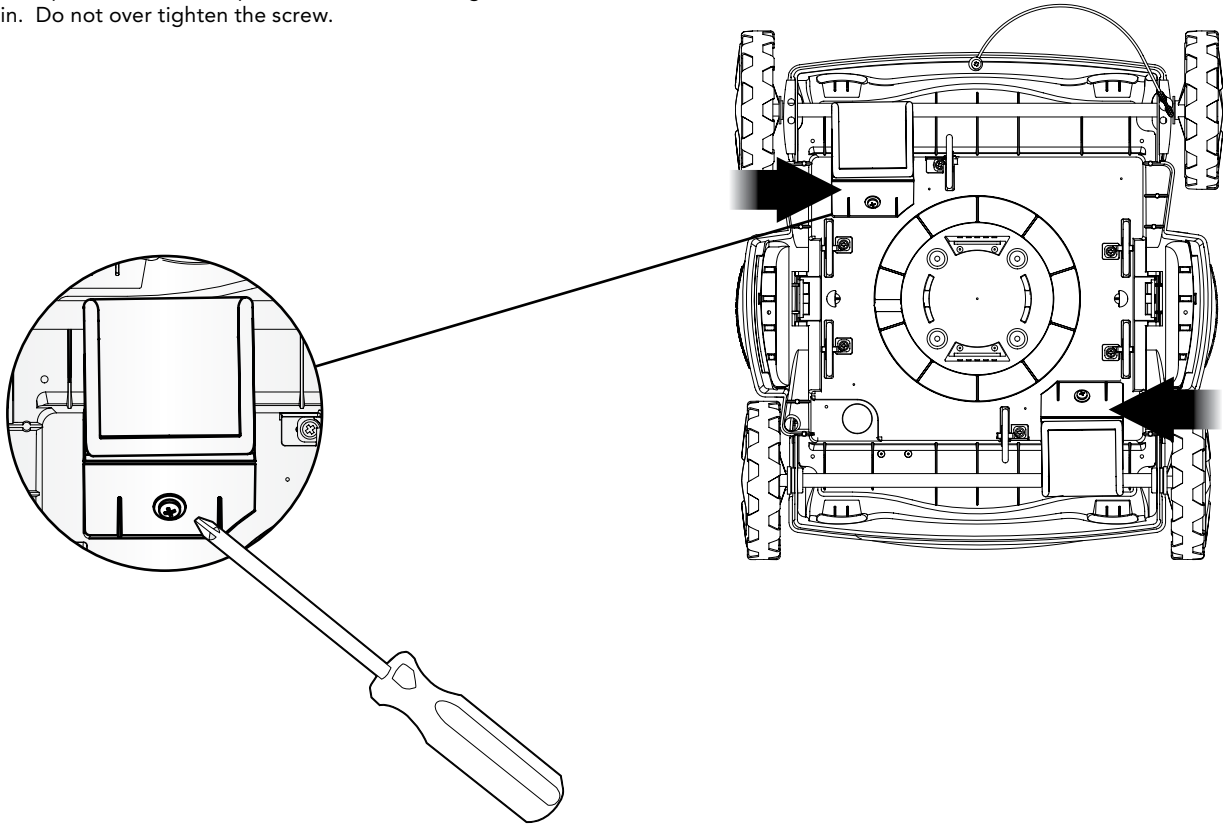
PRODUCT SETTINGS and TROUBLESHOOTING

ADJUSTING THE SUCTION PORTS

Your cleaner is equipped with two adjustable suction ports on the underside of the unit. Both can be lowered to maximize the suction strength for picking up smaller debris. The suction ports are set to the lowest position by default.

To adjust the ports, turn the cleaner over and use a Phillips head screw driver to loosen the screw on the ports. Pull out the ports to the desired length and tighten the screw again. Do not over tighten the screw.

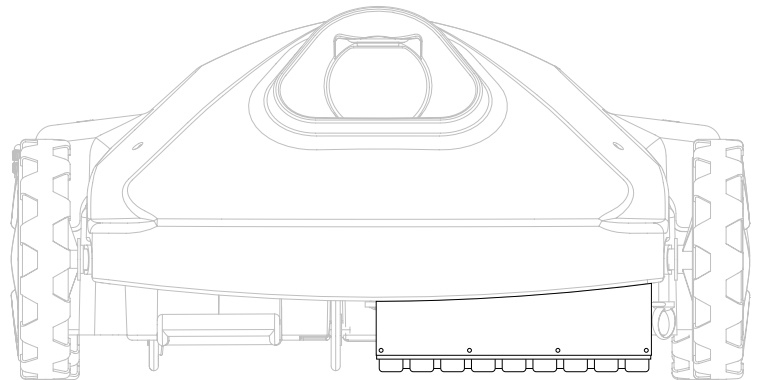
Underside view of the cleaner showing location of adjustable suction ports



PASSIVE AGITATOR BRUSH (select models)

Select models have a passive agitator brush. This brush is not a moving part or powered by your cleaner. It is meant to pass over your pool floor and agitate dirt and debris in order to get vacuumed up into the cleaner.

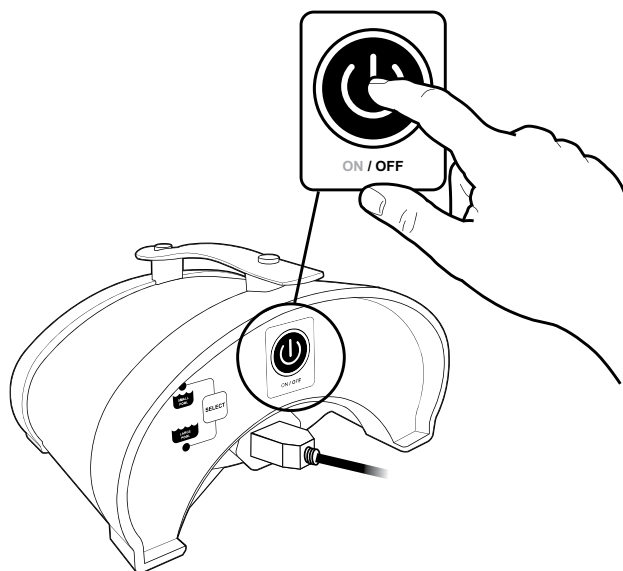
NOTE: Please do not attempt to remove this brush.



PRODUCT SETTINGS and TROUBLESHOOTING



WARNINGS



WARNING: Do not turn the Power Supply on, unless the pool cleaner is in the water.

WARNING: Do not operate your machine while people swim in the pool.

WARNING: The Power Supply must be placed at least 12 feet / 4 meters from the pool's edge at all times! See diagram below.

WARNING: To prevent possible electric shock hazard this unit must be connected to an RCD (Residual Current Device) with a related residual operating current not exceeding 30mA.

WARNING: Before performing any troubleshooting maintenance procedures, your Cleaner should be disconnected from the Power Supply (transformer) and the Power Supply should be unplugged from the electrical outlet to prevent the possibility of personal injury or damage to your Cleaner!

DESCRIPTIVE TROUBLESHOOTING

ISSUE	RECOMMENDED SOLUTION
Moves slowly or doesn't seem to be vacuuming	<ul style="list-style-type: none">• This is the most common question. The solution is to make sure that the filter bag is thoroughly clean• Check to see that the suction ports are not clogged or blocked
All LED lights are blinking on the power supply	<ul style="list-style-type: none">• Check to see if the unit is out of water• Check to see if the filter bag is stuck in the screen• Check to see if the propellers are stuck• To restart, press the power button once. Cleaning program will resume from where it left off.
The Floating Cable is coiled up	<ul style="list-style-type: none">• Change the axle set-up. Unit is most likely turning too sharply. Use the E-Z Swivel to straighten out the cable
My unit is not sucking up debris	<ul style="list-style-type: none">• Check to see that you've properly set-up the unit and power supply• Check to see if the propellers are stuck• Adjust the suction ports on the bottom of the unit
Unit is stuck in the middle of the pool but the unit still pumps out water	<ul style="list-style-type: none">• Check to see that there is nothing obstructing the cleaner or that the cleaner is not stuck on any loose objects in the pool.• The suction ports are far too low to the pool bottom. Adjust as necessary.
My cleaner looks like it is moving in the same area of the pool and does not clean other areas	<ul style="list-style-type: none">• Change the axle set up by adjusting the pin configuration. This will help move the cleaner in a different direction• Check axle and turning pin configurations
Does not cover the entire pool	<ul style="list-style-type: none">• Check to see that the filter bag is thoroughly clean• Adjust the timing cycle on the power supply• Check to see that the axle area is not clogged• Check axle and turning pin configurations

This guide provides descriptive troubleshooting for this unit.
Should you need help with an issue that is not described in this manual, please call the number below.

CALL CUSTOMER SERVICE AT 800-221-1750

You may also download the Quick Start Guide as well as the Settings and Troubleshooting Manual at: www.Aquabot.com

IF THIS PRODUCT IS NOT WORKING AS INTENDED
PLEASE CALL CUSTOMER SERVICE AT

800-221-1750