

PREMIUM ELEMENT FILTER OPERATING INSTRUCTIONS

STARTING THE PUMP AND FILTER SYSTEM:

1. Thread the filter lock-ring clockwise onto filter tank body **until the latches engage (click).**
2. Secure filter drain plug.
3. Set all pool water valves to allow flow from pool, through pump and filter system and back to pool.
4. Open air relief valve completely by turning counterclockwise.
5. Stand away from filter as you start pump.
6. Close air relief valve by rotating clockwise when a steady stream of water discharges.

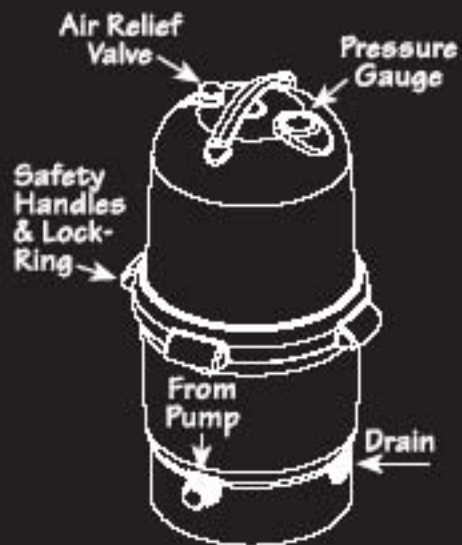
FILTER ELEMENT MAINTENANCE:

Clean or replace filter element when water pressure increases 5-7 PSI above starting pressure.

1. Turn pump off before servicing.
2. Close all pool water valves to prevent backflow from pool.
3. Open air relief valve completely by rotating counterclockwise.
4. Remove filter drain plug to allow water to drain from filter.
5. Remove filter lock-ring and tank lid by squeezing latches under handles and rotating lock-ring counterclockwise.
6. Clean the filter cartridge element with a garden hose.
7. Remove debris from filter tank bottom.
8. Reassemble filter cartridge, filter lock-ring and tank lid.
9. Follow instructions under "STARTING THE PUMP AND FILTER SYSTEM" above.

FILTER SPECIFICATIONS

APPROVED FOR FRESH OR SALT WATER				
MODEL	75 SQ. FT.	100 SQ. FT.	150 SQ. FT.	200 SQ. FT.
Effective Filtration Area	75 Ft²	100 Ft²	150 Ft²	200 Ft²
Maximum Flow Capacity	75 GPM	80 GPM	120 GPM	120 GPM
Maximum Working Pressure	30 PSI	30 PSI	30 PSI	30 PSI
Suggested Clearance	18" Side 24" Above	18" Side 24" Above	18" Side 30" Above	18" Side 30" Above
Replacement Cartridge	817-0075N	817-0100N	817-0150N	817-0200N

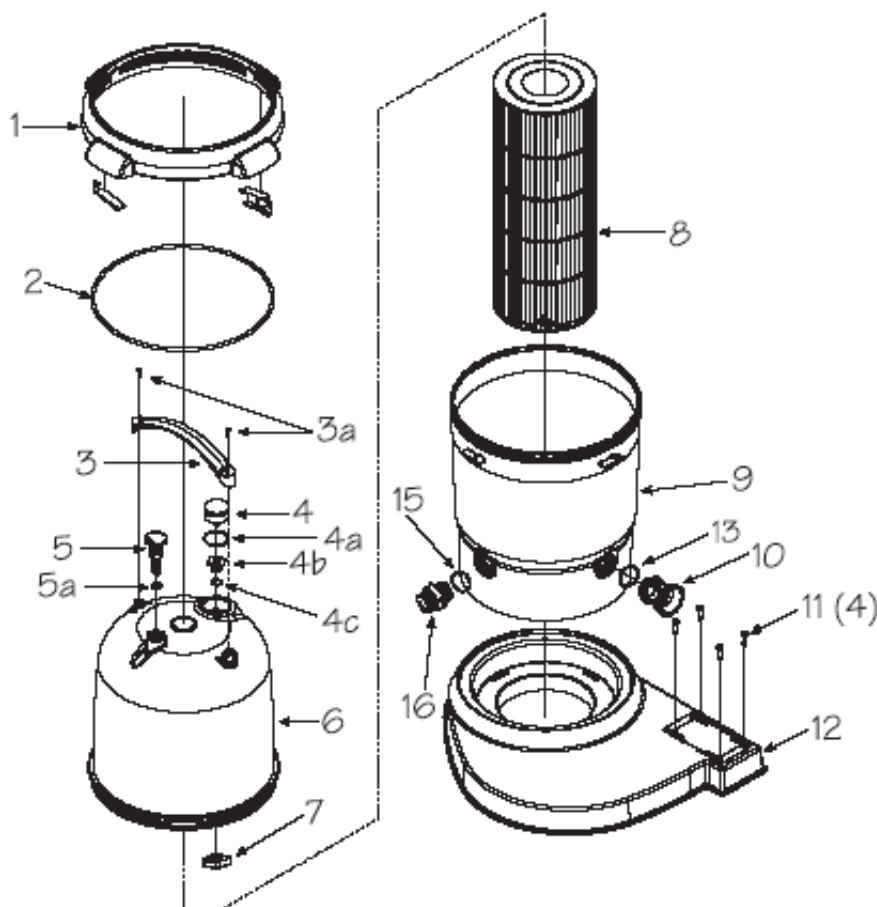


Serial No.

Waterway

2200 East Sturgis Rd.
Oxnard, CA 93030, USA.

808-0167.0208



ClearWater II Cartridge Filter Replacement Parts

Item	Part No.	Description
1	550-2060	Filter Locknut Assembly
2	805-0460	Lid O-Ring
3	519-7601	Lid Handle
3a	819-9002	#12 x 3/4" Stainless Steel Phillips Head Screw
4	830-4000SS	Pressure Gauge
4a	805-0136	O-Ring - Air Relief
4b	519-7431	Gauge - Fitting Adapter
4c	805-0116EP	O-Ring - Adapter
5	602-0201	Air Relief Plug
5a	805-0207	O-Ring - Air Relief
6	519-7410	Lid Assembly (Small)
	519-7400	Lid Assembly (Large)
7	519-7441	Gauge Lock-Nut
8	817-0075N	75 sq. ft. Cartridge
	817-0100N	100 sq. ft. Cartridge
	817-0150N	125 sq. ft. Cartridge
	817-0200N	200 sq. ft. Cartridge
9	515-7250	Filter Body
10	500-5300	Drain Assembly
11	429-7221	Base Fasteners (4 required)
12	672-7401	ClearWater II Base
13	805-0224	O-Ring
15	805-0224	O-Ring
16	500-5300	Drain Assembly