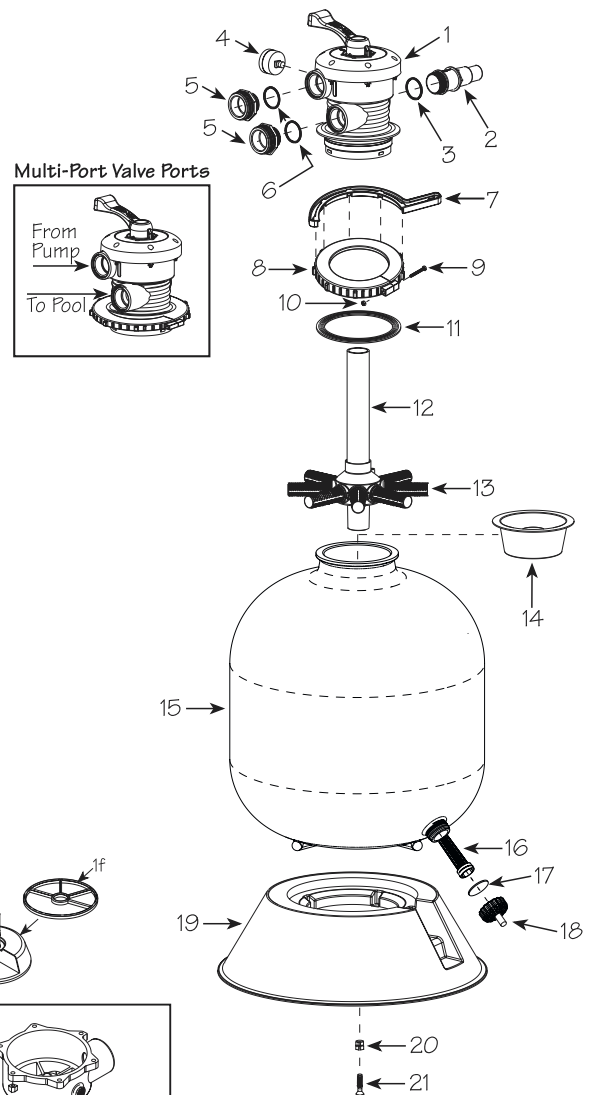


# CAREFREE

## HIGH RATE SAND FILTER

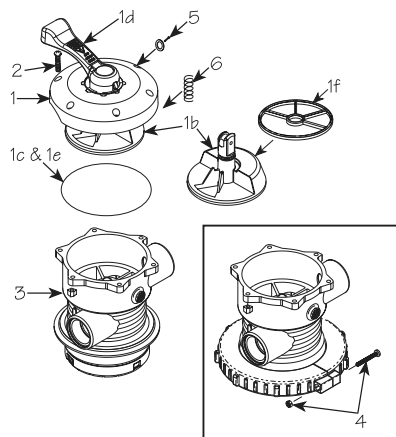
### SAND FILTER PARTS LIST

Item	Parts No.	Description
1	WVS003	Multi-Port Valve Assembly
2	425-1928	Waste Adapter Fitting
3	805-0224	O-Ring
4	830-3000	PSI Gauge
5	417-4161	1½" Buttress x 1½" MPT Fitting (2)
6	805-0224	1½" Buttress x 1½" MPT Fitting O-Ring (2)
7	505-1970	Split-Nut Wrench
8	718-1960	Split Nut – Sand Filter
9	819-0015	Screw – 1/4"-20 PPH X 2"
10	820-0013	Hex Nut – Serrated 1/4"-20
11	805-0435	O-Ring
12	505-2140	Lateral – Manifold Assembly for 16" Filter
	505-2150	Lateral – Manifold Assembly for 19" Filter
	505-2160	Lateral – Manifold Assembly for 22" Filter
	505-2180	Lateral – Manifold Assembly for 26" Filter
13	505-1930	Lateral
14	502-2011	Sand Fill Guide
15	505-0271	16" Sand Filter Body
	505-0281	19" Sand Filter Body
	505-0291	22" Sand Filter Body
	505-0301	26" Sand Filter Body
16	602-5310	Self-Threading Drain Screen
17	805-0224	O-Ring
18	602-5301	Drain Screen Cap/Wrench
19	672-7211	Filter Base Modular
20	820-0017	Washer 3/8" Flat
21	819-0016	Bolt 16"/ 19" Sand Filter 3/8"-16 x 2" Hex
	819-0039	Bolt 22" Sand Filter 3/8"- 16 x 2½" Hex
	819-0041	Bolt 26" Sand Filter 3/8"-16 x 3½" Hex
**	810-0160	Instruction Sheet



### MULTI-PORT VALVE PARTS LIST

1	600-9600	Multi-Port Lid Assembly
1b	600-9500	Divertor Valve Assembly w/Gasket
1c	805-0254	Lid O-Ring (2001 & Before)
1d	602-1931	Lid Handle Only
1e	805-0254	Lid O-Ring (2003)
1f	711-1910B	Divertor Gasket (Spider)
		(NOTE: We recommend purchasing gasket glued into diverter by the factory.)
2	819-0010	Lid Screw
3	820-0013	Hex Nut
4	800-0100	Split-Nut Bolt & Nut
5	800-0150	O-Ring Kit w/Pin & Washer
6	827-0002	Spring



The Carefree Sand Filters are the latest in pool filter technology. Its oval tank design evenly distributes the pressure resulting in greater strength and longer life.

## CAREFREE SAND FILTER INSTALLATION INSTRUCTIONS

1. Open box and remove filter and Multi-Port Valve assembly.
2. **Important:** To prevent damage to internal filter lateral components, fill filter tank full with water prior to adding sand. With Sand Fill Guide, #14, 502-2011, positioned in filter tank opening, add only recommended #20 grade silica sand. **See Fill Chart.** Remove Sand Fill Guide. **Important: Clean and remove all debris from filter tank flange after adding sand.**
3. Insure the O-ring #11, 805-0435, is positioned onto Multi-Port throat.
4. Install Multi-Port Valve with inlet and outlet ports facing pool. Top of internal sand pipe seats directly into Multi-Port Valve. Push Multi-Port Valve evenly onto tank flange and tighten Split-Nut. **Note: Make sure tank flange is clear of any sand debris.**
5. Use #7, 505-1970, Split-Nut wrench to tighten further, place on Split-Nut and use both hands to turn wrench 1/2 to 3/4 of a turn to secure Multi-Port Valve to filter body.
6. Verify that the Drain Screen Cap, #18, 602-5301 is completely tightened.

## CLEANING INSTRUCTIONS

**Note:** When pressure gauge reading is 5 PSI or higher than original starting pressure, the filter needs to be cleaned. The Carefree Sand Filter System features our exclusive 7-Position Multi-Port Valve, which ensures safe and simple filter maintenance.



**Pressurized vessel. Never attempt to loosen or open Split-Nut, #6, 718-1960. It could cause severe injury or harm to user.**

1. Turn off pump.
2. Attach **Backwash** hose (optional) to waste port adapter.
3. Rotate Multi-Port Valve handle to **Backwash** position, **Turn pump on** and run for 90 second intervals or until discharge water is clear. **Turn pump off.**
4. Rotate Multi-Port Valve handle to **Rinse** position. **Turn pump on** for 30 seconds.
5. Repeat steps 3 & 4 until all discharge water is clear while pump is turned on.
6. **Turn pump off.** Rotate Multi-Port Valve handle to **Filter** position. **Turn pump on.** Valve is now in normal operating position.



**WARNING: NEVER CHANGE VALVE POSITION WITH PUMP RUNNING!**

## WINTERIZATION

1. **Backwash** filter system completely. (Follow cleaning instructions.)
2. Run a filter cleaning chemical through filter system.
3. **Turn pump off.** Rotate Multi-Port Valve to winterizing position.
4. Remove Drain Screen Cap #602-5301 from bottom of filter tank.
5. Unscrew drain plugs located at bottom of pump trap and front of pump housing. Let water drain completely.
6. The above steps will prepare your system for winterizing. Contact your local Pool Professional for the proper winterization of your system.

## TROUBLESHOOTING

**INADEQUATE FILTERING:** Sand Level Too Low  
Inadequately Cleaned System  
Excessive Dirt Load  
Chemical Imbalance  
Inadequate System Pressure

**NO WATER FLOW:** Obstruction of Suction or Return Line  
Clogged Impeller  
Suction System Air Leaks  
Slice Valve Closed  
Clogged Hose Fitting  
Clogged Basket  
Dirty Sand

<b>SAND FILL CHART:</b>	
16" Model	- 100 lbs.
19" Model	- 200 lbs.
22" Model	- 250 lbs.
26" Model	- 400 lbs.

## LIMITED WARRANTY

Waterway Plastics manufactures its products and equipment in accordance with very high standards of workmanship. We use the best materials available and maintain the highest quality procedures practical in the industry. In accordance, Waterway warrants its products as follows:

All thermoplastic molded filter bodies and rotational molded sand filter bodies have a warranty of ten years, warranted on a pro-rata life basis. If a defect becomes apparent during the first year, the body will be exchanged for a new body if the defects are determined by Waterway to be the responsibility of Waterway Plastics. If a defect becomes apparent after the first year from the date of manufacture which, in the opinion of Waterway, will require replacement, the body will be exchanged for a new tank on an adjusted service pro-rata life basis. Charges to the owner, on the pro-rata life basis, will be determined by the actual number of months installed.

Products that fail or become defective during the warranty period, except as a result of improper installation, bad water chemistry, accidents or negligence on behalf of the owner, freezing, earthquakes, fire floods, or other acts of nature, shall be repaired or replaced at Waterway's option without charge to the owner. This process will be completed within 90 days of receipt of the defective product barring delays caused by the acquisition of component parts not manufactured at our facility.

To obtain warranty replacements or repair, defective products should be returned (transportation paid) to the place of purchase. It should include a description of the defect and the circumstances surrounding the incident or problem. Warranty applies only to OEM's and distributors of Waterway.

Warranty begins on the date of purchase. Waterway shall not be responsible for cartage, removal and/or reinstallation labor, or any other such costs incurred in obtaining warranty replacements. This warranty gives you specific legal rights. You may also have other rights which vary from state to state.